

# ★ Simile Bingo

Developed by Stuart Scott and inspired by Nora Ward at Nottingham Bluecoat.

The webaddress for this activity is:

<http://www.collaborativelearning.org/similebingo.pdf>

Last enlarged and updated 21st November 2012

Teachers' Notes.

*Old Marley was as dead as a door-nail.*

*Mind! I don't mean to say that I know, of my own knowledge, what there is particularly dead about a door-nail.*

*I might have been inclined, myself, to regard a coffin-nail as the deadliest piece of ironmongery in the trade.*

*But the wisdom of our ancestors is in the simile; and that my unhallowed hand shall not disturb it, or the Country's done for. You will therefore permit me to repeat, emphatically, that Marley was as dead as a doornail.*

Charles Dickens: A Christmas Carol

This is a game which introduces children to the clichéd similes which of course will sound fresher to them than to us, and by doing so to show how similes work and how they can construct their own original ones. We're working on some bilingual versions, so if you are familiar with a language that owns a fair selection of its own, please contribute. These metalinguistic activities are a good prequel to poetry making, and children learning English, naturally more language conscious, enjoy them in particular.

## The Materials

a) Two set of four large cards each with six names and pictures of items to which a clichéd simile refers. eg: "a rake" or "ice".

b) Two sets of 24 small cards each with an " ---- as ---" "e.g daft as"

We now have two sets prepared and a third will follow soon. The card sets are numbered so you can keep them in order

Pupils work in groups of four and have a large card each. The small cards are spread out upside down. Pupils take turns to pick up a small card. If they can cover a picture they can do so, but everyone else should agree that it is a suitable simile. If they cannot use the small card they should put it back in the same place.

The winner is the first player to cover all their pictures.

Some creative similes from "A Christmas Carol":

Scrooge was "hard as flint" and "as solitary as an oyster".

a dismal light was "like a bad lobster in a dark cellar".

Christmas pudding "like a speckled cannon ball".

violinist tuned his fiddle "like fifty stomachaches".

# How to play Simile Bingo

Dead as a



Easy as



This game is for four players.

Each player has a bingo board with words and pictures.

You also have a set of 24 small “as .....as” cards. These should be spread out upside down on your table.

Players take turns to pick a up a small card and read out what is on it. If they can cover a picture on their board they can do so, but every player must agree that it is a good simile. If they can't cover a picture, they must replace the card in the same place.

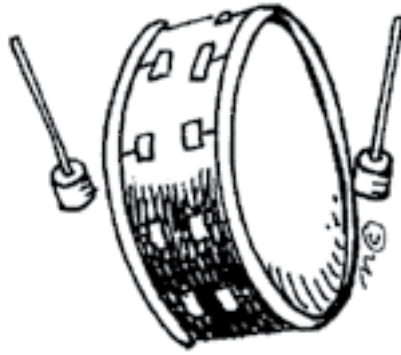
First player to cover all the pictures on their board is the winner.

Clichéd similes which will be included in activity when completed. Starred items not in the activity yet. We need to think of a few more to make up another set of 24. Any suggestions?

swift as an arrow  
smooth as a baby's bottom  
busy as a bee  
clear as a bell  
dry as a bone  
\*bold as brass  
daft as a brush  
soft as butter  
bright as button  
poor as a churchmouse  
happy as a cricket  
cool as a cucumber  
fresh as a daisy  
\*straight as a die  
\*dull as ditchwater  
dead as a doornail  
\*pure as the driven snow  
tight as a drum  
slippery as an eel  
light as feather  
fit as fiddle  
crafty as a fox  
good as gold  
quiet as the grave  
mad as a hatter  
\*hot as hell  
old as the hills  
hungry as a horse  
big as a house  
cold as ice  
black as ink  
\*patient as Job  
sober as a judge  
rich as a king  
\*high as a kite  
\*happy as larry  
heavy as lead  
quick as lightning  
\*brave as a lion  
cheeky as a monkey  
quiet as a mouse  
hard as nails  
\*black as night  
clean as a new pin  
\*drunk as a newt  
right as ninepins  
sweet as a nut  
wise as an owl  
strong as an ox  
silent as an oyster  
sick as a parrot  
proud as a peacock  
easy as pie/pi?  
scared as a rabbit  
right as rain  
thin as a rake  
sharp as a razor  
heavy as a sackload of potatoes  
white as a sheet  
\*ugly as sin  
\*naughty as a tinker  
warm as toast  
slow as a tortoise  
clean as a whistle  
\*wicked as a witch



a feather



a drum



a razor



a bone



an ox



lead

Set 1

Set 1



a daisy



a sackload of  
potatoes



a baby's bottom

a bell



doornail



a mouse



ninepins



toast



a fox



a brush



the hills



the grave

Set 1

Set 1

ink



a whistle



a bee



a button



a rake

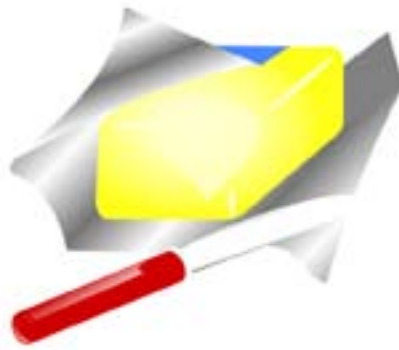


ice

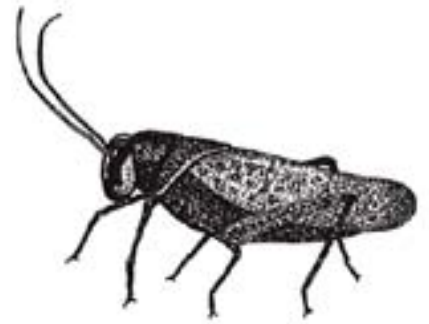
as light as .... Set 1	as tight as.... Set 1	as sharp as.... Set 1
as dry as.... Set 1	as strong as.... Set 1	as heavy as .... Set 1
as fresh as.... Set 1	as heavy as.... Set 1	as smooth as.... Set 1
as clear as.... Set 1	as dead as.... Set 1	as quiet as.... Set 1
as right as .... Set 1	as warm as .... Set 1	as crafty as.... Set 1
as daft as.... Set 1	as old as.... Set 1	as silent as.... Set 1
as black as.... Set 1	as clean as....	as busy as.... Set 1
as bright as.... Set 1	as thin as.... Set 1	as cold as .... Set 1
Set 1 Bingo cards for cutting up		



an arrow



butter



a cricket



a cucumber



a monkey



an eel

Set 2

Set 2



a fiddle



a judge



a nut



a parrot



a peacock



a rabbit



a king



a hatter



gold



lightning



a sheet



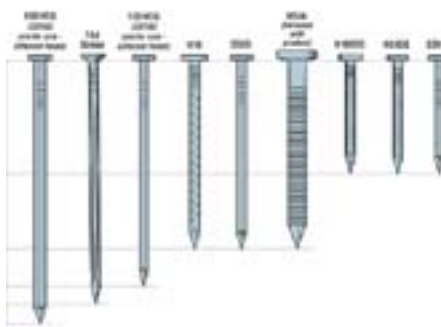
rain

Set 2

Set 2



a house



nails



an owl



a oyster



pi pie



a tortoise



as straight as .... Set 2	as soft as.... Set 2	as happy as.... Set 2
as cool as.... Set 2	as cheeky as.... Set 2	as slippery as .... Set 2
as fit as.... Set 2	as sober as.... Set 2	as sweet as.... Set 2
as sick as.... Set 2	as proud as.... Set 2	as scared as.... Set 2
as rich as .... Set 2	as mad as .... Set 2	as good as.... Set 2
as fast as.... Set 2	as white as.... Set 2	as wise as.... Set 2
as big as.... Set 2	as hard as.... Set 2	as busy as.... Set 2
as silent as.... Set 2	as easy as.... Set 2	as slow as .... Set 2
Set 2	Set 2	Set 2
Set 1 Bingo cards for cutting up		