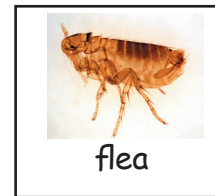
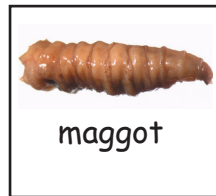




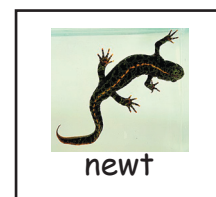
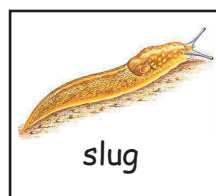
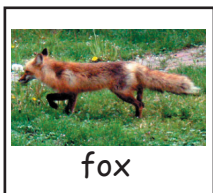
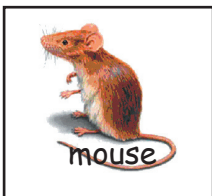
# Quicklook at "Where Can You Find Me?" Connect Four

This activity is the first of a group on animal habitats. This one was developed with KS1 in mind. Before the game is played children could work together to cover the board with the cards. The board is designed for this to be possible, but it will involve moving cards around a bit. We have concentrated here on animals that can be found or sighted in central London playgrounds during the day.



Where Can You Find Me Connect Four

under a stone	under the ground	in long grass	on a window	on a leaf	on a flower
inside a pipe	on a living thing	on still water	on a tree	on a branch	in the air
under a log	under water	on a dead thing	at the edge of some water	under bushes	on a wall
under dead leaves	up in the sky	in the sunshine	next to a gutter	by a dustbin	in a dark corner



**HOW TO PLAY CONNECT FOUR**  
 You need 4 people, one baseboard and two sets of cards (different colours.)  
 Work with a partner to make a team of two.  
 Shuffle your cards and place them in a pile facing down.  
 Take it in turn to turn over your top card and decide where to put it on the board.  
 The winning team gets four in row vertically, horizontally or diagonally.  
 Decide whether to have challenges or a checking system.