

★ Quicklook at two of the "States of Matter" activities.

Solids Liquids and Gases Connect Four Game Board

Solids Liquids and Gases Card Game (shown below)

A card game for 3 players or 3 groups of players.

Aim: You must try and collect all the cards which describe the state (solid, liquid or gas) shown on your picture card.

Instructions.

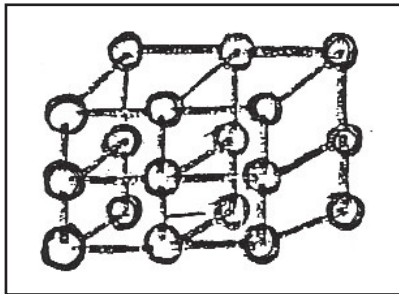
A. Short game.

1. There are three picture cards. Place them face down on the table.
2. Each player/group picks a picture card.
3. Shuffle the other cards and spread them face up on the table.
4. Take it in turns to pick a card. If it describes your picture card, keep it. If not, you must give it to the player who needs it!
5. The game continues until all the players have completed their sets.

B. Longer game.

Replace rule 5 with: If the statement describes your picture keep it. If not, put it back on the table face up.

It flows but is does not have a fixed volume.	It can be squeezed.	It does not have a fixed shape.	It has a fixed volume.	It has a fixed volume but you cannot walk through it.	You cannot squeeze it easily and you cannot pour it.
It does not flow.	It has a fixed volume and a fixed shape.	It cannot be squeezed easily.	It does not spread throughout the whole room.	It does not have a fixed shape nor a fixed volume.	You can walk through it.
You can pour it, but it does not have a fixed volume.	You can walk through it but it does not have a fixed volume.	It flows, but it has a fixed volume.	It does not have a fixed shape.	It has a fixed volume, but you can walk through it.	You can pour it and you can squeeze it easily.
It can spread throughout a whole room.	It cannot be squeezed easily, but you can walk through it.	It has a fixed shape.	It does not have a fixed volume.	It flows.	You cannot pour it.
You cannot walk through it.	It has a fixed volume.	It does not spread throughout the room, but it does not have a fixed shape.	It has a fixed volume, but it does not have a fixed shape.	It has a fixed shape.	It flows, but it does not have a fixed volume.

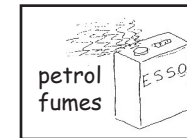
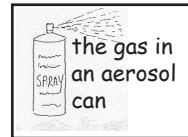


The particles are spread far apart.

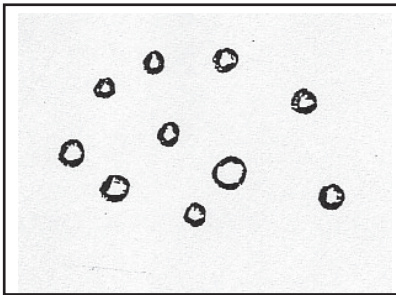
It has a fixed volume, but it changes shape.

It spreads out in all directions.

It spreads to fill the bottom of a container.

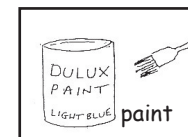
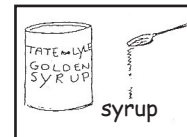
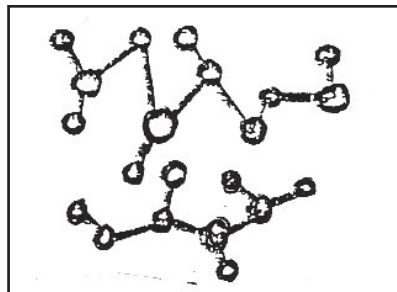


It flows from one container to another.



It has a fixed shape and size.

The particles have some movement energy



Connect Four

A set of picture cards like these are printed in two colours to play Connect Four on the board above